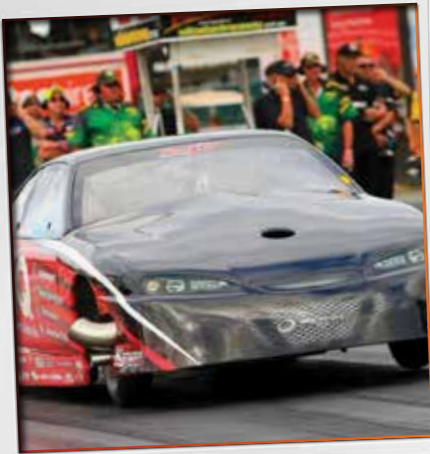


247
HOSE & FITTINGS

PRODUCT CATALOGUE

#FITTINGS247



Chris Tait
3RZ – Good Times Racing



Michael Pratten
Blown LS – Spastic



Craig Bailey
IMPOSTER – Outlaw Motorsport



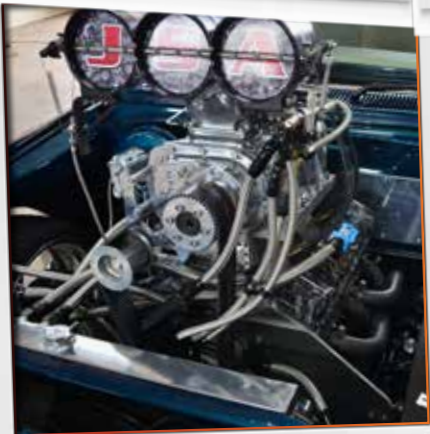
Tim Barby
Blown LSI – Mojo Motorsports



Matt Cole
20BT – MC Towing



Jay Sloan
Isuzu G180 Turbo



Jack Seaman
JSA Automotive



Chopper Keen
13BT – Choppers Autobody Shop



Stephen Noble – LLEC Motorsport
350Z by Shaw Performance



Warbird
565 Chev – Castlemaine Rod Shop



Matt Esplan
Mazda RX7 –13BT



Josh Gabriel
RASTUS – Gambier Kustom Autos

RUBBER BRAIDED HOSES	2
100 SERIES HOSE ENDS	3
TEFLON BRAIDED HOSES	4
200 SERIES TEFLON HOSE ENDS	5
400 SERIES HOSE & HOSE ENDS	6
CLAMPS & SEPARATORS	7
HARDLINE AND HEAT PRODUCTS	8
BARB HOSE ENDS	9
AN FLARE ADAPTERS	10
ORB ADAPTERS	11
NPT ADAPTERS	12
METRIC ADAPTERS	13
PLUGS, REDUCERS & CAPS	14
BULKHEADS	15
TEE'S & Y BLOCKS	16
BANJO'S, GAUGES AND ACCESSORIES	17
CARBIE FUEL RAILS AND ADAPTERS	18
EFI ADAPTERS & ACCESSORIES	19
FUEL FILTERS AND ACCESSORIES	20
FUEL PUMPS, BRACKETS & FUEL CELLS	21
TURBO & LINE ACCESSORIES	22
BRAKE LINE & S/S FITTINGS	23
S/S BRAKE FITTINGS	24
S/S BANJOS AND BOLTS	25
OIL BREATHERS & ADAPTERS	26
TRANSMISSION KITS & ADAPTERS	27
FABRICATION ACCESSORIES	28
TOOLS	29
SILICONE	30
LS ENGINE FITTINGS	32

*WARRANTY

247 Performance Hose & Fittings are manufactured using quality materials to industry and engine specifications. With a continued quality control program we aim to offer the best product, service and price to our valued customers.

247 offers a full 12 months warranty from date of purchase on our entire range on manufacturer fault. Warranty is limited to the repair or replacement of the part and shall not exceed the original purchase price of the goods. Warranty does not cover transit damage, misuse, incorrect fitment or use of the product, proof of purchase will be required for all warranty claims. If there are any issues relating to warranty please contact the place of purchase.

247 and its logo are a registered trademark and their use will require written approval by 247 Performance Hose & Fittings. All pictures and text are representations of our current product range and may change from time to time during the current catalogue. If you have any questions or concerns please contact your local 247 Distributor. All care has been taken in the production of this catalogue, we take no responsibilities for any error in printing.

For any fitment/assembly instructions or queries we can be contacted via sales@fittings247.com

Thank you for your support.

100 & 450 SERIES HOSE

Our 100 series S/S braid offers a corrosion resistance multi-layer S/S braid for both durability and looks. Our black nylon 450 series hose offers a multi-layer hi tensile stainless steel wire which is located under the black nylon to help increase burst pressures and aids in tight radius bends to prevent kinking. The hose is then covered with black nylon braid that helps prevent abrasions. This complete process offers a quality light weight hose. Both hoses use a Synthetic Acrylonitrile Butadiene inner liner which is compatible with the E85 and methanol fuel.

- Suits 100 series cutter fittings
- Suits Ethanol, Methanol, oils, coolants
- Acrylonitrile Butadiene inner liner
- Min Temp -40c Max Temp 150c



100 SERIES STAINLESS STEEL BRAIDED & 450 SERIES BLACK NYLON HOSE

SIZE	STAINLESS STEEL	BLACK NYLON	I.D (MM)	O.D (MM)	O.P (PSI)	B.P (PSI)
-4	100-04-1M	450-04-1M	5.5mm	11.1mm	1000 PSI	6000 PSI
-6	100-06-1M	450-06-1M	8.7mm	13.9mm	1000 PSI	6000 PSI
-8	100-08-1M	450-08-1M	11.1mm	16.1mm	1000 PSI	5000 PSI
-10	100-10-1M	450-10-1M	14.3mm	20.3mm	1000 PSI	5000 PSI
-12	100-12-1M	450-12-1M	17.5mm	23.8mm	1000 PSI	3500 PSI
-16	100-16-1M	450-16-1M	22.2mm	29.8mm	750 PSI	2000 PSI
-20	100-20-1M	450-20-1M	26.7mm	36.5mm	500 PSI	1500 PSI

*Hose is sold by the meter in continuous lengths



100 SERIES COLOURED HOSE END SOCKETS

SIZE	RED	BLACK	BLUE	SILVER
-4	SOCKET-14R	SOCKET-14BLK	SOCKET-14	SOCKET-14S
-6	SOCKET-16R	SOCKET-16BLK	SOCKET-16	SOCKET-16S
-8	SOCKET-18R	SOCKET-18BLK	SOCKET-18	SOCKET-18S
-10	SOCKET-110R	SOCKET-110BLK	SOCKET-110	SOCKET-110S
-12	SOCKET-112R	SOCKET-112BLK	SOCKET-112	SOCKET-112S
-16	SOCKET-116R	SOCKET-116BLK	SOCKET-116	SOCKET-116S
-20	SOCKET-120R	SOCKET-120BLK	SOCKET-120	SOCKET-120S



INNER COIL SUPPORT

SIZE	PART NO.	LENGTH
-10	INNER-10	
-12	INNER-12	
-16	INNER-16	
-20	INNER-20	

100 SERIES HOSE ENDS

247 fittings are made from 6061-T6 aluminium and CNC machined to ensure a precise, professional quality finish every time. Our 100 series full flow cutter design is assembled with quality Nitrile O-ring seals to ensure superior sealing performance against all oil and fuels including E85. The full flow one-piece design offers superior strength along with a smooth uninterrupted flow from the flare to the hose tail with no steps unlike other brands. All our fittings undergo a forging process for added strength and durability then hand polished before anodising for a quality finish.

- 100 series hose ends suit our 100 & 450 series rubber braided hose.



STRAIGHT HOSE END

SIZE (AN)	RED/BLUE	BLACK
-4	101-04	101-04BLK
-6	101-06	101-06BLK
-8	101-08	101-08BLK
-10	101-10	101-10BLK
-12	101-12	101-12BLK
-16	101-16	101-16BLK
-20	101-20	101-20BLK

30° HOSE ENDS

SIZE (AN)	RED/BLUE	BLACK
-4	107-04	107-04BLK
-6	107-06	107-06BLK
-8	107-08	107-08BLK
-10	107-10	107-10BLK
-12	107-12	107-12BLK
-16	107-16	107-16BLK

45° HOSE ENDS

SIZE (AN)	RED/BLUE	BLACK
-4	102-04	102-04BLK
-6	102-06	102-06BLK
-8	102-08	102-08BLK
-10	102-10	102-10BLK
-12	102-12	102-12BLK
-16	102-16	102-16BLK
-20	102-20	102-20BLK

60° HOSE ENDS

SIZE (AN)	RED/BLUE	BLACK
-4	108-04	108-04BLK
-6	108-06	108-06BLK
-8	108-08	108-08BLK
-10	108-10	108-10BLK
-12	108-12	108-12BLK
-16	108-16	108-16BLK



90° HOSE ENDS

SIZE (AN)	RED/BLUE	BLACK
-4	103-04	103-04BLK
-6	103-06	103-06BLK
-8	103-08	103-08BLK
-10	103-10	103-10BLK
-12	103-12	103-12BLK
-16	103-16	103-16BLK
-20	103-20	103-20BLK

120° HOSE ENDS

SIZE (AN)	RED/BLUE	BLACK
-4	104-04	104-04BLK
-6	104-06	104-06BLK
-8	104-08	104-08BLK
-10	104-10	104-10BLK
-12	104-12	104-12BLK
-16	104-16	104-16BLK

150° HOSE ENDS

SIZE (AN)	RED/BLUE	BLACK
-4	105-04	105-04BLK
-6	105-06	105-06BLK
-8	105-08	105-08BLK
-10	105-10	105-10BLK
-12	105-12	105-12BLK
-16	105-16	105-16BLK

180° HOSE ENDS

SIZE (AN)	RED/BLUE	BLACK
-4	106-04	106-04BLK
-6	106-06	106-06BLK
-8	106-08	106-08BLK
-10	106-10	106-10BLK
-12	106-12	106-12BLK
-16	106-16	106-16BLK

200 & 250 SERIES HOSE

Our 200 and 250 series hose has a PTFE inner liner and uses the highest quality S/S available. The PTFE inner liner not only offers a greater operating and burst pressure but does not permeate like rubber hoses making it the perfect choice for exotic blends of fuels and emission controlled cars.

* Suitable for brakes, power steering, nitrous, vacuum, pressure, oils, fuel and hydraulic applications. * Min temp -70 to 250 deg



200 SERIES S/S & 250 SERIES BLACK NYLON TELFON HOSE

SIZE (AN)	200 SERIES	250 SERIES	I.D (MM)	O.D (MM)	O.P (PSI)	B.P (PSI)
-3	200-03-1M	250-03-1M	3.5	6.3	4000PSI	12000PSI
-4	200-04-1M	250-04-1M	4.8	7.6	4000PSI	12000PSI
-6	200-06-1M	250-06-1M	8.1	10.9	3000PSI	10000PSI
-8	200-08-1M	250-08-1M	10.6	13.7	2500PSI	8000PSI
-10	200-10-1M	250-10-1M	12.9	16	2000PSI	6000PSI
-12	200-12-1M	250-12-1M	16.2	19.3	1000PSI	4000PSI

*Hose is sold by the meter in continuous lengths



STAINLESS STEEL PTFE STRAIGHT HOSE END

SIZE (AN)	PART NO.
-3	201-03
-4 TO -3 PTFE HOSE	201-04-03SS
-4	201-04SS

STAINLESS STEEL 45° HOSE ENDS

SIZE (AN)	PART NO.
-3	202-03SS
-4	202-04SS

STAINLESS STEEL 90° HOSE ENDS

SIZE (AN)	RED/BLUE
-3	203-03SS
-4	203-04SS

REPLACEMENT OLIVE FOR 200 SERIES TEFLON FITTINGS

SUIT	PART NO.
-3 STAINLESS STEEL	OLIVE-200
-4 STAINLESS STEEL	OLIVE-201
-3 ALLOY	OLIVE-203
-4 ALLOY	OLIVE-204
-6 ALLOY	OLIVE-206
-8 ALLOY	OLIVE-208
-10 ALLOY	OLIVE-210
-12 ALLOY	OLIVE-212

200 SERIES COLOURED HOSE END SOCKETS

SIZE	RED	BLACK	BLUE	SILVER
-3	SOCKET-23R	SOCKET-23BLK	SOCKET-23	SOCKET-23S
-4	SOCKET-24R	SOCKET-24BLK	SOCKET-24	SOCKET-24S
-6	SOCKET-26R	SOCKET-26BLK	SOCKET-26	SOCKET-26S
-8	SOCKET-28R	SOCKET-28BLK	SOCKET-28	SOCKET-28S
-10	SOCKET-210R	SOCKET-210BLK	SOCKET-210	SOCKET-210S
-12	SOCKET-212R	SOCKET-212BLK	SOCKET-212	SOCKET-212S

200 SERIES HOSE ENDS

247 fittings are made from 6061-T6 aluminium and CNC machined to ensure a precise, professional quality finish every time. Our 200 series full flow compression fitting is assembled with quality Nitrile O-ring seals to ensure superior sealing performance against all oil and fuels including E85. The full flow one-piece design offers superior strength along with a smooth uninterrupted flow from the flare to the hose tail with no steps unlike other brands. All our fittings undergo a forging process for added strength and durability then hand polished before anodising for a quality finish.



STRAIGHT TEFLON HOSE END

SIZE (AN)	RED/BLUE	BLACK
-3	201-03D	201-03DBLK
-4	201-04D	201-04DBLK
-6	201-06D	201-06DBLK
-8	201-08D	201-08DBLK
-10	201-10D	201-10DBLK
-12	201-12D	201-12DBLK



30° FULL FLOW HOSE END

SIZE (AN)	RED/BLUE	BLACK
-4	207-04D	207-04DBLK
-6	207-06D	207-06DBLK
-8	207-08D	207-08DBLK
-10	207-10D	207-10DBLK
-12	207-12D	207-12DBLK



45° FULL FLOW HOSE END

SIZE (AN)	RED/BLUE	BLACK
-3	202-03D	202-03DBLK
-4	202-04D	202-04DBLK
-6	202-06D	202-06DBLK
-8	202-08D	202-08DBLK
-10	202-10D	202-10DBLK
-12	202-12D	202-12DBLK



60° FULL FLOW HOSE END

SIZE (AN)	RED/BLUE	BLACK
-4	208-04D	208-04DBLK
-6	208-06D	208-06DBLK
-8	208-08D	208-08DBLK
-10	208-10D	208-10DBLK
-12	208-12D	208-12DBLK



90° HOSE ENDS

SIZE (AN)	RED/BLUE	BLACK
-3	203-03D	203-03DBLK
-4	203-04D	203-04DBLK
-6	203-06D	203-06DBLK
-8	203-08D	203-08DBLK
-10	203-10D	203-10DBLK
-12	203-12D	203-12DBLK



120° HOSE ENDS

SIZE (AN)	RED/BLUE	BLACK
-4	204-04D	204-04DBLK
-6	204-06D	204-06DBLK
-8	204-08D	204-08DBLK
-10	204-10D	204-10DBLK
-12	204-12D	204-12DBLK



150° HOSE ENDS

SIZE (AN)	RED/BLUE	BLACK
-4	205-04D	205-04DBLK
-6	205-06D	205-06DBLK
-8	205-08D	205-08DBLK
-10	205-10D	205-10DBLK
-12	205-12D	205-12DBLK



180° HOSE ENDS

SIZE (AN)	RED/BLUE	BLACK
-4	206-04D	206-04DBLK
-6	206-06D	206-06DBLK
-8	206-08D	206-08DBLK
-10	206-10D	206-10DBLK
-12	206-12D	206-12DBLK

400 SERIES HOSE

Our Push on hose has been designed to use with our 400 series push lock fittings. Offering an Acrylonitrile Butadiene inner liner to suit E85 and methanol fuels, the durable wrapped outer liner protects it from heat and will not crack with day to day usages like other brands. Just like the rest of our hose ends, our 400 series offers a smooth uninterrupted flow with no drilling or steps like other brands.

- The use of a clamp is recommended where temperature exceed 70 deg.
- Temp range -40°C to 100°



4000 SERIES E85 COMPATIBLE PUSH LOCK HOSE

SIZE (AN)	BLUE	BLACK	I.D (MM-INCH)	O.D(MM)	OPP PRESSURE	BURST PRESSURE
-4	400-04-IM	400-04-IMBLK	6.4mm - 1/4"	12.7mm	300PSI	1000PSI
-6	400-06-IM	400-06-IMBLK	9.5mm - 3/8"	15.7mm	300PSI	1000PSI
-8	400-08-IM	400-08-IMBLK	12.7mm - 1/2"	19.0mm	300PSI	1000PSI
-10	400-10-IM	400-10-IMBLK	15.9mm - 5/8"	22.9mm	300PSI	1000PSI
-12	400-12-IM	400-12-IMBLK	19.1mm - 3/4"	26.2mm	300PSI	1000PSI

*Hose is sold by the meter in continuous lengths



STRAIGHT HOSE END

SIZE (AN)	RED/BLUE	BLACK
-04	401-04	401-04BLK
-06	401-06	401-06BLK
-08	401-08	401-08BLK
-10	401-10	401-10BLK
-12	401-12	401-12BLK



30° FULL FLOW HOSE END

SIZE (AN)	RED/BLUE	BLACK
-04	407-04	407-04BLK
-06	407-06	407-06BLK
-08	407-08	407-08BLK
-10	407-10	407-10BLK
-12	407-12	407-12BLK



45° FULL FLOW HOSE END

SIZE (AN)	RED/BLUE	BLACK
-04	402-04	402-04BLK
-06	402-06	402-06BLK
-08	402-08	402-08BLK
-10	402-10	402-10BLK
-12	402-12	402-12BLK



60° FULL FLOW HOSE END

SIZE (AN)	RED/BLUE	BLACK
-04	408-04	408-04BLK
-06	408-06	408-06BLK
-08	408-08	408-08BLK
-10	408-10	408-10BLK
-12	408-12	408-12BLK



90° HOSE ENDS

SIZE (AN)	RED/BLUE	BLACK
-04	403-04	403-04BLK
-06	403-06	403-06BLK
-08	403-08	403-08BLK
-10	403-10	403-10BLK
-12	403-12	403-12BLK



120° HOSE ENDS

SIZE (AN)	RED/BLUE	BLACK
-04	404-04	404-04BLK
-06	404-06	404-06BLK
-08	404-08	404-08BLK
-10	404-10	404-10BLK
-12	404-12	404-12BLK



120° HOSE ENDS

SIZE (AN)	BLUE	BLACK
-04	405-04	405-04BLK
-06	405-06	405-06BLK
-08	405-08	405-08BLK
-10	405-10	405-10BLK
-12	405-12	405-12BLK



180° HOSE ENDS

SIZE (AN)	BLUE	BLACK
-04	406-04	406-04BLK
-06	406-06	406-06BLK
-08	406-08	406-08BLK
-10	406-10	406-10BLK
-12	406-12	406-12BLK



HEX HOSE FINISHER

SIZE (ID)	BLUE	BLACK	RED	SILVER
12mm	150-04	150-04BLK	150-04R	150-04S
14.3mm	150-05	150-05BLK	150-05R	150-05S
15mm	150-06	150-06BLK	150-06R	150-06S
16.5mm	150-07	150-07BLK	150-07R	150-07S
17mm	150-08	150-08BLK	150-08R	150-08S
20mm	150-10	150-10BLK	150-10R	150-10S
24.95mm	150-12	150-12BLK	150-12R	150-12S
28.5mm	150-14	150-14BLK	150-14R	150-14S
30.5mm	150-16	150-16BLK	150-16R	150-16S
40.5mm	150-20	150-20BLK	150-20R	150-20S
44.5mm	150-24	150-24BLK	150-24R	150-24S
49.2mm	150-28	150-28BLK	150-28R	150-28S
52mm	150-30	150-30BLK	150-30R	150-30S
54mm	150-32	150-32BLK	150-32R	150-32S



S/S HOSE CLAMPS

ID (MM)	QTY	PART NO:
6-12mm	5PK	HC-0612
9-16mm	5PK	HC-0912
12-19mm	5PK	HC-1219
16-25mm	5PK	HC-1625
21-44mm	5PK	HC-2144
27-51mm	5PK	HC-2751
33-57mm	5PK	HC-3357
46-70mm	2PK	HC-4670
60-83mm	2PK	HC-6083
76-92mm	2PK	HC-7692
91-114mm	2PK	HC-9114

PUSH LOCK CLAMPS

HOSE SIZE	QTY	PART NO:
-4	5PK	400-C04
-6	5PK	400-C06
-8	5PK	400-C08
-10	5PK	400-C10
-12	5PK	400-C12



P-CLAMP BLACK

PREFIX	PART NO.
05	PC-05
06	PC-06
08	PC-08
10	PC-10
11	PC-11
13	PC-13
14	PC-14
16	PC-16
19	PC-19
24	PC-24
28	PC-28
38	PC-38
51	PC-51

SINGLE BILLET ALUMINIUM P-CLAMP

PREFIX	BLACK	SILVER
05	BPC-05BLK	BPC-05
06	BPC-06BLK	BPC-06
08	BPC-08BLK	BPC-08
10	BPC-10BLK	BPC-10
11	BPC-11BLK	BPC-11
13	BPC-13BLK	BPC-13
14	BPC-14BLK	BPC-14
16	BPC-16BLK	BPC-16
19	BPC-19BLK	BPC-19
24	BPC-24BLK	BPC-24

TWIN BILLET ALUMINIUM P-CLAMP

PREFIX	BLACK	SILVER
05	BPC-205BLK	BPC-205
06	BPC-206BLK	BPC-206
08	BPC-208BLK	BPC-208
10	BPC-210BLK	BPC-210
11	BPC-211BLK	BPC-211
13	BPC-213BLK	BPC-213
14	BPC-214BLK	BPC-214
16	BPC-216BLK	BPC-216
19	BPC-219BLK	BPC-219
24	BPC-224BLK	BPC-224
28	BPC-228BLK	BPC-228

CLAMP SIZING GUIDE

PREFIX	BRAID	PTFE	H/LINE	P-LOCK
05			3/16	
06		-3	1/4	
08		-4	5/16	
10			3/8	
11	-4	-6		
13			1/2	-4
14	-6	-8		
16	-8	-10	5/8	-6
19	-10	-12		-8
24	-12			-10
28	-16			-12
38	-20			
51				2" ID



ALLOY HARDLINE

SIZE	BLACK	RAW	LENGTH
1/4"	HL-14BLK	HL-14	7M
5/16"	HL-516BLK	HL-516	7M
3/8"	HL-38BLK	HL-38	7M
1/2"	HL-12BLK	HL-12	7M
5/8"	HL-58BLK	HL-58	7M



TUBE TO MALE AN ADAPTERS

SIZE	HARDLINE	BLACK	BLUE/RED
-6	5/16	110-05BLK	110-05
-6	3/8	110-06BLK	110-06
-8	1/2	110-08BLK	110-08
-10	5/8	110-10BLK	110-10



ALUMINIUM TUBE NUT TO SUIT HARD LINE TUBE

SIZE	HARDLINE	BLACK	BLUE
-3	3/16	818-03BLK	818-03
-4	1/4	818-04BLK	818-04
-6	3/8	818-06BLK	818-06
-8	1/2	818-08BLK	818-08
-10	5/8	818-10BLK	818-10

*Suits tube sleeves hard line adapters



ALUMINIUM TUBE SLEEVE TO SUIT HARD LINE TUBE

SIZE	HARDLINE	BLACK	BLUE
-3	3/16	819-03BLK	819-03
-4	1/4	819-04BLK	819-04
-6	3/8	819-06BLK	819-06
-8	1/2	819-08BLK	819-08
-10	5/8	819-10BLK	819-10

*Suits tube nuts hard line adapters



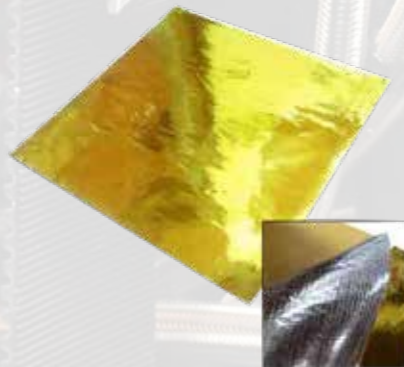
TUBE TO FEMALE AN ADAPTERS

SIZE	HARDLINE	BLACK	BLUE/RED
-6	5/16	109-05BLK	109-05
-6	3/8	109-06BLK	109-06
-8	1/2	109-08BLK	109-08
-10	5/8	109-10BLK	109-10



SPARK PLUG BOOT SLEEVES

PART NUMBER	QTY
SPARK-4	4 PACK



GOLD REFLECTIVE HEAT SHEET (ADHESIVE BACKING)

PART NUMBER	SIZE
HS-G500	500mm X 500mm



FIBREGLASS HEAT SLEEVE

PART NO:	SIZE	SUITS
HS-10	10mm	-3 & 4 TEFLON
HS-12	12mm	-4 BRAID, -6 TEFLON, -4 PUSHLOCK
HS-15	15mm	-6 BRAID, -8 TEFLON, -6 PUSHLOCK
HS-20	20mm	-8 BRAID, -10 TEFLON, -8 PUSHLOCK
HS-25	25mm	-10 BRAID, -12 BRAID, -12 TEFLON, -12 PUSHLOCK
HS-30	30mm	-16 BRAID
HS-40	40mm	-20 BRAID



STRAIGHT HOSE BARB

AN	BARB	BLACK	BLUE
-6	5/16"	411-05BLK	411-05
-6	3/8"	411-06BLK	411-06
-8	1/2"	411-08BLK	411-08
-10	1/2"	411-10BLK	411-10
-16	1"	411-16BLK	411-16
-20	1-1/2"	411-20BLK	411-20



45° HOSE BARB

AN	BARB	BLACK	BLUE
-6	5/16"	412-05BLK	412-05
-6	3/8"	412-06BLK	412-06
-8	1/2"	412-08BLK	412-08



90° HOSE BARB

AN	BARB	BLACK	BLUE
-6	5/16"	413-05BLK	413-05
-6	3/8"	413-06BLK	413-06
-8	1/2"	413-08BLK	413-08



STRAIGHT BARB TO NPT ADAPTER

NPT	BARB	BLACK	BLUE
1/8	1/4	421-02-04BLK	421-02-04
1/4	3/8	421-04-06BLK	421-04-06
3/8	1/2	421-06-08BLK	421-06-08



45° BARB TO NPT ADAPTER

NPT	BARB	BLACK	BLUE
1/8	1/4	422-02-04BLK	422-02-04
1/4	3/8	422-04-06BLK	422-04-06
3/8	1/2	422-06-08BLK	422-06-08



90° BARB TO NPT ADAPTER

NPT	BARB	BLACK	BLUE
1/8	1/4	423-02-04BLK	423-02-04
1/4	3/8	423-04-06BLK	423-04-06
3/8	1/2	423-06-08BLK	423-06-08



METRIC TO BARB (SUITS BOSCH PUMPS)

THREAD	BARB	BLACK	BLUE
M12x1.5	3/8	731-01BLK	731-01
M12x1.5	1/2	731-02BLK	731-02
M18x1.5	1/2	734-02BLK	734-02



AN FLARE TO BARB ADAPT

AN	BARB	BLACK	BLUE
-6	1/4	817-05BLK	817-05
-6	3/8	817-06BLK	817-06
-8	3/9	817-08-06BLK	817-08-06
-8	1/2	817-08BLK	817-08
-10	1/2	817-10-08BLK	817-10-08
-10	5/8	817-10BLK	817-10



ORB TO BARB

ORB	BARB	BLACK	BLUE
-6	1/4	414-06-04BLK	414-06-04
-6	5/16	414-06-05BLK	414-06-05
-6	3/8	414-06-06BLK	414-06-06
-8	3/8	414-08-06BLK	414-08-06
-8	1/2	414-08-08BLK	414-08-08
-10	3/8	414-10-06BLK	414-10-06
-10	1/2	414-10-08BLK	414-10-08



MALE FLARE UNION

AN 1	AN 2	BLUE	BLACK
-3	-3	815-03	815-03BLK
-4	-3	815-04-03	815-04-03BLK
-4	-4	815-04	815-04BLK
-6	-4	815-06-04	815-06-04BLK
-6	-6	815-06	815-06BLK
-8	-6	815-08-06	815-08-06BLK
-8	-8	815-08	815-08BLK
-10	-6	815-10-06	815-10-06BLK
-10	-8	815-10-08	815-10-08BLK
-10	-10	815-10	815-10BLK
-12	-6	815-12-06	815-12-06BLK
-12	-8	815-12-08	815-12-08BLK
-12	-10	815-12-10	815-12-10BLK
-12	-12	815-12	815-12BLK
-16	-10	815-16-10	815-16-10BLK
-16	-12	815-16-12	815-16-12BLK
-16	-16	815-16	815-16BLK
-20	-12	815-20-12	815-20-12BLK
-16	-16	815-20-16	815-20-16BLK



MALE TO MALE WITH 1/8" PORT

AN	BLUE	BLACK
-3	141-03	141-03BLK
-4	141-04	141-04BLK
-6	141-06	141-06BLK
-8	141-08	141-08BLK
-10	141-10	141-10BLK
-12	141-12	141-12BLK
-16	141-16	141-16BLK



45° FULL FLOW UNION

AN	BLUE	BLACK
-3	522-03	522-03BLK
-4	522-04	522-04BLK
-6	522-06	522-06BLK
-8	522-08	522-08BLK
-10	522-10	522-10BLK
-12	522-12	522-12BLK
-16	522-16	522-16BLK



90° FULL FLOW UNION

AN	BLUE	BLACK
-3	523-03	523-03BLK
-4	523-04	523-04BLK
-6	523-06	523-06BLK
-8	523-08	523-08BLK
-10	523-10	523-10BLK
-12	523-12	523-12BLK
-16	523-16	523-16BLK



NPT TO AN

AN	FEMALE NPT	BLUE	BLACK
-3	1/8	370-03	370-03BLK
-4	1/8	370-04	370-04BLK

FEMALE TO MALE WITH 1/8" PORT

AN	BLUE	BLACK
-3	140-03	140-03BLK
-4	140-04	140-04BLK
-6	140-06	140-06BLK
-8	140-08	140-08BLK
-10	140-10	140-10BLK
-12	140-12	140-12BLK
-16	140-16	140-16BLK

45° FEMALE TO MALE COUPLER

AN	BLUE	BLACK
-4	142-04	142-04BLK
-6	142-06	142-06BLK
-8	142-08	142-08BLK
-10	142-10	142-10BLK
-12	142-12	142-12BLK
-16	142-16	142-16BLK

90° FEMALE TO MALE COUPLER

AN	BLUE	BLACK
-4	143-04	143-04BLK
-6	143-06	143-06BLK
-8	143-08	143-08BLK
-10	143-10	143-10BLK
-12	143-12	143-12BLK
-16	143-16	143-16BLK



90° NPT TO AN

AN	FEMALE NPT	BLUE	BLACK
-3	1/8	373-03	373-03BLK
-4	1/8	373-04	373-04BLK



FEMALE TO FEMALE COUPLER

SIZE (AN)	BLUE	BLACK
-03	131-03	131-03BLK
-04	131-04	131-04BLK
-06	131-06	131-06BLK
-08	131-08	131-08BLK
-10	131-10	131-10BLK
-12	131-12	131-12BLK



45° FULL FLOW FEMALE COUPLER

AN	BLUE	BLACK
-4	132-04	132-04BLK
-6	132-06	132-06BLK
-8	132-08	132-08BLK
-10	132-10	132-10BLK
-12	132-12	132-12BLK
-16	132-16	132-16BLK



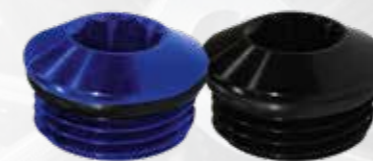
90° FEMALE TO MALE COUPLER

AN	BLUE	BLACK
-4	133-04	133-04BLK
-6	133-06	133-06BLK
-8	133-08	133-08BLK
-10	133-10	133-10BLK
-12	133-12	133-12BLK
-16	133-16	133-16BLK



ORB MALE FLARE ADAPTER

AN	ORB	BLUE	BLACK
-4	-4	920-04	920-04BLK
-4	-6	920-04-06	920-04-06BLK
-4	-8	920-04-08	920-04-08BLK
-6	-6	920-06	920-06BLK
-6	-8	920-06-08	920-06-08BLK
-6	-10	920-06-10	920-06-10BLK
-8	-8	920-08	920-08BLK
-8	-6	920-08-06	920-08-06BLK
-8	-10	920-08-10	920-08-10BLK
-8	-12	920-08-12	920-08-12BLK
-10	-10	920-10	920-10BLK
-10	-6	920-10-06	920-10-06BLK
-10	-8	920-10-08	920-10-08BLK
-10	-12	920-10-12	920-10-12BLK
-10	-16	920-10-16	920-10-16BLK
-12	-12	920-12	920-12BLK
-12	-8	920-12-08	920-12-08BLK
-10	-10	920-12-10	920-12-10BLK
-12	-16	920-12-16	920-12-16BLK
-16	-16	920-16	920-16BLK
-16	-12	920-16-12	920-16-12BLK
-20	-20	920-20	920-20BLK



ORB PORT PLUG

SIZE (AN)	BLUE	BLACK
-3	814-03	814-03BLK
-4	814-04	814-04BLK
-6	814-06	814-06BLK
-8	814-08	814-08BLK
-10	814-10	814-10BLK
-12	814-12	814-12BLK
-16	814-16	814-16BLK

NBR O-RING KIT (E85 & METHANOL)

SIZE	QTY	PART NO.
-3	5pk	NBR-03
-4	5pk	NBR-04
-6	5pk	NBR-06
-8	5pk	NBR-08
-10	5pk	NBR-10
-12	5pk	NBR-12
-16	5pk	NBR-16
-20	5pk	NBR-20



45° ORB MALE FLARE ADAPTER

AN	ORB	BLUE	BLACK
-4	-4	922-04	922-04BLK
-4	-6	922-04-06	922-04-06BLK
-6	-6	922-06	922-06BLK
-6	-8	922-06-08	922-06-08BLK
-8	-8	922-08	922-08BLK
-8	-6	922-08-06	922-08-06BLK
-8	-10	922-08-10	922-08-10BLK
-10	-10	922-10	922-10BLK
-12	-12	922-12	922-12BLK



FEMALE ORB TEE

SIZE (AN)	BLUE	BLACK
-4	938-04	938-04BLK
-6	938-06	938-06BLK
-8	938-08	938-08BLK
-10	938-10	938-10BLK
-12	938-12	938-12BLK



ORB PLUG WITH 1/8TH

SIZE	BLUE	BLACK
-6	813-06-02	813-06-02 BLK
-8	813-08-02	813-08-02BLK
-10	813-10-02	813-10-02BLK
-12	813-12-02	813-12-02BLK



90° ORB MALE FLARE ADAPTER

AN	ORB	BLUE	BLACK
-4	-4	923-04	923-04BLK
-4	-6	923-04-06	923-04-06BLK
-6	-6	923-06	923-06BLK
-6	-8	923-06-08	923-06-08BLK
-8	-8	923-08	923-08BLK
-8	-6	923-08-06	923-08-06BLK
-8	-10	923-08-10	923-08-10BLK
-10	-8	923-10-08	923-10-08BLK
-10	-10	923-10	923-10BLK
-10	-12	923-10-12	923-10-12BLK
-12	-12	923-12	923-12BLK



ORB TO FEMALE SWIVEL

SWIVEL	ORB	BLUE	BLACK
-6	-6	921-06	921-06BLK
-6	-8	921-06-08	921-06-08BLK
-6	-10	921-06-10	921-06-10BLK
-8	-8	921-08	921-08BLK
-8	-6	921-08-06	921-08-06BLK
-8	-10	921-08-10	921-08-10BLK
-8	-12	921-08-12	921-08-12BLK
-10	-10	921-10	921-10BLK
-10	-8	921-10-08	921-10-08BLK
-10	-12	921-10-12	921-10-12BLK
-12	-12	921-12	921-12BLK



MALE TO FEMALE 1 INCH EXTENSION

SIZE (AN)	BLUE	BLACK
-6	952-06	952-06BLK
-8	952-08	952-08BLK
-10	952-10	952-10BLK
-12	952-12	952-12BLK





NPT TO STRAIGHT MALE FLARE ADAPTER

THREAD/AN	BLUE	BLACK
1/8" TO -3AN	816-03	816-03BLK
1/4" TO -3AN	816-03-04	816-03-04BLK
1/8" TO -4AN	816-04	816-04BLK
1/16" TO -4AN	815-04-01	815-04-01BLK
1/4" TO -4AN	816-04-04	816-04-04BLK
1/4" TO -6AN	816-06	816-06BLK
1/8" TO -6AN	816-06-02	816-06-02BLK
3/8" TO -6AN	816-06-06	816-06-06BLK
1/2" TO -6AN	816-06-08	816-06-08BLK
3/8" TO -8AN	816-08	816-08BLK
1/4" TO -8AN	816-08-04	816-08-04BLK
1/2" TO -8AN	816-08-08	816-08-08BLK
3/4" TO -8AN	816-08-12	816-08-12BLK
1/2" TO -10AN	816-10	816-10BLK
3/8" TO -10AN	816-10-06	816-10-06BLK
3/4" TO -10AN	816-10-12	816-10-12BLK
3/4" TO -12AN	816-12	816-12BLK
1/2" TO -12AN	816-12-08	816-12-08BLK
1" TO -12AN	816-12-16	816-12-16BLK
1" TO -16AN	816-16	816-16BLK
3/4" TO -16AN	816-16-12	816-16-12BLK
1-1/4" TO -20AN	816-20	816-20BLK
1" TO -20AN	816-20-16	816-20-16BLK



45° FULL FLOW ADAPTER

THREAD/AN	BLUE	BLACK
1/8" NPT TO -3AN	822-03	822-03BLK
1/8" NPT TO -4AN	822-04	822-04BLK
1/4" NPT TO -6AN	822-06	822-06BLK
3/8" NPT TO -6AN	822-06-06	822-06-06BLK
3/8" NPT TO -8AN	822-08	822-08BLK
1/2" NPT TO -10AN	822-10	822-10BLK
3/4" NPT TO -12AN	822-12	822-12BLK
3/4" NPT TO -16AN	822-16	822-16BLK



90° FULL FLOW ADAPTER

THREAD/AN	BLUE	BLACK
1/8" NPT TO -3AN	823-03	823-03BLK
1/4" NPT TO -3AN	823-03-04	823-03-04BLK
1/8" NPT TO -4AN	823-04	823-04BLK
1/4" NPT TO -4AN	823-04-04	823-04-04BLK
3/8" NPT TO -4AN	823-04-06	823-04-06BLK
1/4" NPT TO -6AN	823-06	823-06BLK
1/8" NPT TO -6AN	823-06-02	823-06-02BLK
3/8" NPT TO -6AN	823-06-06	823-06-06BLK
1/2" NPT TO -6AN	823-06-08	823-06-08BLK
3/8" NPT TO -8AN	823-08	823-08BLK
1/4" NPT TO -8AN	823-08-04	823-08-04BLK
1/2" NPT TO -8AN	823-08-08	823-08-08BLK
1/2" NPT TO -10AN	823-10	823-10BLK
3/8" NPT TO -10AN	823-10-06	823-10-06BLK
3/4" NPT TO -10AN	823-10-12	823-10-12BLK
3/4" NPT TO -12AN	823-12	823-12BLK
1/2" NPT TO -12AN	823-12-08	823-12-08BLK
1" NPT TO -16AN	823-16	823-16BLK
3/4" NPT TO -16AN	823-16-12	823-16-12BLK



NPT MALE COUPLER

THREAD	BLUE	BLACK
1/8" NPT	911-02	911-02BLK
1/4" NPT	911-04	911-04BLK
3/8" NPT	911-06	911-06BLK
1/2" NPT	911-08	911-08BLK
3/4" NPT	911-12	911-12BLK



MALE TEE WITH NPT ON SIDE

THREAD/AN	BLUE	BLACK
1/8" TO -3AN	825-03	825-03BLK
1/8" TO -4AN	825-04	825-04BLK
1/4" TO -6AN	825-06	825-06BLK
3/8" TO -8AN	825-08	825-08BLK
1/2" TO -10AN	825-10	825-10BLK
3/4" TO -12AN	825-12	825-12BLK



MALE TEE WITH NPT ON RUN

THREAD/AN	BLUE	BLACK
1/8" TO -4AN	826-04	826-04BLK
1/4" TO -6AN	826-06	826-06BLK
3/8" TO -8AN	826-08	826-08BLK
1/2" TO -10AN	826-10	826-10BLK
3/4" TO -12AN	826-12	826-12BLK



45° NPT FEMALE TO MALE

THREAD	BLUE	BLACK
1/8" TO 1/8"	915-02	915-02BLK
1/4" TO 1/4"	915-04	915-04BLK
3/8" TO 3/8"	915-06	915-06BLK



90° NPT FEMALE TO MALE

THREAD	BLUE	BLACK
1/8" TO 1/8"	914-02	914-02BLK
1/4" TO 1/4"	914-04	914-04BLK
3/8" TO 3/8"	914-06	914-06BLK



NPT TO AN

AN	FEMALE NPT	BLUE	BLACK
-3	1/8	370-03	370-03BLK
-4	1/8	370-04	370-04BLK



90° NPT TO AN

AN	FEMALE NPT	BLUE	BLACK
-3	1/8	373-03	373-03BLK
-4	1/8	373-04	373-04BLK



METRIC ADAPTERS

THREAD	AN	BLUE	BLACK
M10			
M10X1.0MM	-3	729-03-01	729-03-01BLK
M10X1.5MM	-4	729-04	729-04BLK
M10X1.0MM	-4	729-04-01	729-04-01BLK
M10X1.25MM	-4	729-04-02	729-04-02BLK
M10X1.5MM	-6	729-06	729-06BLK
M10X1.0MM	-6	729-06-01	729-06-01BLK
M10X1.25MM	-6	729-06-02	729-06-02BLK
M10X1.25MM	-8	729-08	729-08BLK
M10X1.5MM	-8	729-08-01	729-08-01BLK
M12			
M12X1.5MM	-4	731-04	731-04BLK
M12X1.5MM	-6	731-06	731-06BLK
M12X1.5MM	-8	731-08	731-08BLK
M12X1.5MM	-10	731-10	731-10BLK
M14			
M14X1.5MM	-4	732-04	732-04BLK
M14X1.5MM	-6	732-06	732-06BLK
M14X1.5MM	-8	732-08	732-08BLK
M14X1.5MM	-10	732-10	732-10BLK
M14X1.5MM	-12	732-12	732-12BLK
M16			
M16X1.5MM	-6	733-06	733-06BLK
M16X1.5MM	-8	733-08	733-08BLK
M16X1.5MM	-10	733-10	733-10BLK
M16X1.5MM	-12	733-12	733-12BLK
M18			
M18X1.5MM	-6	734-06	734-06BLK
M18X1.5MM	-8	734-08	734-08BLK
M18X1.5MM	-10	734-10	734-10BLK
M18X1.5MM	-12	734-12	734-12BLK
M20			
M20X1.5MM	-6	735-06	735-06BLK
M20X1.5MM	-8	735-08	735-08BLK
M20X1.5MM	-10	735-10	735-10BLK
M20X1.5MM	-12	735-12	735-12BLK
M22			
M22X1.5MM	-6	736-06	736-06BLK
M22X1.5MM	-8	736-08	736-08BLK
M22X1.5MM	-10	736-10	736-10BLK
M22X1.5MM	-12	736-12	736-12BLK
M24			
M24X1.5MM	-8	737-08	737-08BLK
M24X1.5MM	-10	737-10	737-10BLK
M24X1.5MM	-12	737-12	737-12BLK



METRIC PLUG (WITH WASHER)

SIZE	BLUE	BLACK
M10x1.0	739-10	739-10BLK
M10x1.25	739-10-1	739-10-1BLK
M12x1.25	739-12	739-12BLK
M12x1.5	739-12-1	739-12-1BLK
M14x1.5	739-14	739-14BLK
M16x1.5	739-16	739-16BLK
M18x1.5	739-18	739-18BLK



METRIC PLUG WITH 1/8TH (WITH WASHER)

SIZE	STAINLESS STEEL	STAINLESS STEEL
M12x1.5	738-12-02SS	738-12-02BLK
M14x1.5	738-14-02	738-14-02BLK
M16x1.5	738-16-02	738-16-02BLK
M18x1.5	738-18-02	738-18-02BLK



ALLOY CRUSH WASHER

SIZE	QTY	PART NUMBER
5/16 - 8mm	5PK	ALLOY-08
3/8 - 10mm	5PK	ALLOY-10
7/16 - 11mm	5PK	ALLOY-11
1/2 - 12mm	5PK	ALLOY-12
9/16 - 14mm	5PK	ALLOY-14
5/8 - 16mm	5PK	ALLOY-16
18mm	5PK	ALLOY-18
7/8 - 22mm	5PK	ALLOY-22



POWER STEER BUMP TUBE ADAPTERS

SIZE	SILVER	BLACK
M14x1.5 TO -6	740-06	740-06BLK
M16x1.5 TO -6	741-06	741-06BLK
M18x1.5 TO -6	742-06	742-06BLK



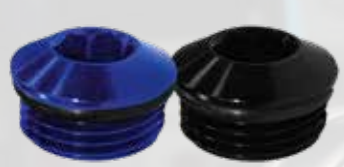
METRIC BARB ADAPTERS (SUIT BOSCH PUMPS)

SIZE	BLUE	BLACK
M12x1.5 TO 3/8 BARB	731-01	731-01BLK
M12x1.5 TO 1/2 BARB	731-02	731-02BLK
M18x1.5 TO 1/2 BARB	734-02	734-02BLK



BOSCH CHECK VALVES

THREAD	AN	BLUE	BLACK
M12x1.5	-6	615-06	615-06BLK
M12x1.5	-8	615-08	615-08BLK



ORB PORT PLUG		
AN	BLUE	BLACK
-3	814-03	814-03BLK
-4	814-04	814-04BLK
-6	814-06	814-06BLK
-8	814-08	814-08BLK
-10	814-10	814-10BLK
-12	814-12	814-12BLK
-16	814-16	814-16BLK

ORB PORT TO 1/8TH NPT		
ORB	BLUE	BLACK
-6	813-06-02	813-06-02BLK
-8	813-08-02	813-08-02BLK
-10	813-10-02	813-10-02BLK
-12	813-12-02	813-12-02BLK

AN FLARE PLUGS		
AN	BLUE	BLACK
-3	806-03	806-03BLK
-4	806-04	806-04BLK
-6	806-06	806-06BLK
-8	806-08	806-08BLK
-10	806-10	806-10BLK
-12	806-12	806-12BLK
-16	806-16	806-16BLK

AN FLARE CAPS		
AN	BLUE	BLACK
-3	820-03	820-03BLK
-4	820-04	820-04BLK
-6	820-06	820-06BLK
-8	820-08	820-08BLK
-10	820-10	820-10BLK
-12	820-12	820-12BLK
-16	820-16	820-16BLK



PLASTIC DUST COVERS	
CAP	PLUG
CAP-03	-3
CAP-04	-4
CAP-06	-6
CAP-08	-8
CAP-10	-10
CAP-12	-12
CAP-16	-16



FLARE EXPANDER			
FEMALE	EXPANDED AN	BLUE	BLACK
-3	-4	951-03-04	951-03-04BLK
-4	-6	951-04-06	951-04-06BLK
-6	-8	951-06-08	951-06-08BLK
-8	-10	951-08-10	951-08-10BLK
-10	-12	951-10-12	951-10-12BLK
-12	-16	951-12-16	951-12-16BLK



FLARE REDUCER			
FEMALE	REDUCED AN	BLUE	BLACK
-4	-3	950-04-03	950-04-03BLK
-6	-3	950-06-03	950-06-03BLK
-6	-4	950-06-04	950-06-04BLK
-8	-6	950-08-06	950-08-06BLK
-10	-06	950-10-06	950-10-06BLK
-10	-08	950-10-08	950-10-08BLK
-12	-08	950-12-08	950-12-08BLK
-12	-10	950-12-10	950-12-10BLK
-16	-12	950-16-12	950-16-12BLK



METRIC PLUG (WITH WASHER)		
THREAD	BLUE	BLACK
M10x1	739-10	739-10BLK
M10x1.25	739-10-1	739-10-1BLK
M12x1.25	739-12	739-12BLK
M12x1.5	739-12-1	739-12-1BLK
M14x1.5	739-14	739-14BLK
M16x1.5	739-16	739-16BLK
M18x1.5	739-18	739-18BLK



METRIC PORT TO 1/8TH NPT (WITH WASHER)		
SIZE	STAINLESS STEEL	STAINLESS STEEL
M12X1.5	738-12-02SS	STAINLESS STEEL

SIZE	BLUE	BLACK
M12X1.5	738-12-02	738-12-02BLK
M14x1.5	738-14-02	738-14-02BLK
M16X1.5	738-16-02	738-16-02BLK
M18x1.5	738-18-02	738-18-02BLK



NPT PIPE REDUCER		
AN	BLUE	BLACK
1/4" TO 1/8"	912-04-02	912-04-02BLK
3/8" TO 1/8"	912-06-02	912-06-02BLK
3/8" TO 1/4"	912-06-04	912-06-04BLK
1/2" TO 1/8"	912-08-02	912-08-02BLK
1/2" TO 1/4"	912-08-04	912-08-04BLK
1/2" TO 3/8"	912-08-06	912-08-06BLK
1/2" TO 1/4"	912-12-04	912-12-04BLK
3/4" TO 3/8"	912-12-06	912-12-06BLK
3/4" TO 1/2"	912-12-08	912-12-08BLK



NPT PLUGS		
NPT	BLUE	BLACK
1/16	932-01	932-01BLK
1/8	932-02	932-02BLK
1/4	932-04	932-04BLK
3/8	932-06	932-06BLK
1/2	932-08	932-08BLK
3/4	932-12	932-12BLK
1"	932-16	932-16BLK



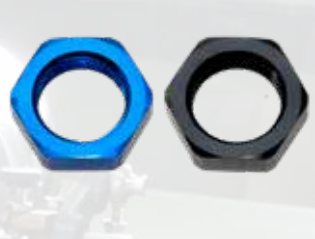
STRAIGHT BULKHEAD		
AN	BLUE	BLACK
-3	832-03	832-03BLK
-4	832-04	832-04BLK
-6	832-06	832-06BLK
-8	832-08	832-08BLK
-10	832-10	832-10BLK
-12	832-12	832-12BLK
-16	832-16	832-16BLK
-20	832-20	832-20BLK



45° BULKHEAD (1 X NUT)		
AN	BLUE	BLACK
-3	837-03	837-03BLK
-4	837-04	837-04BLK
-6	837-06	837-06BLK
-8	837-08	837-08BLK
-10	837-10	837-10BLK
-12	837-12	837-12BLK
-16	837-16	837-16BLK
-20	837-20	837-20BLK



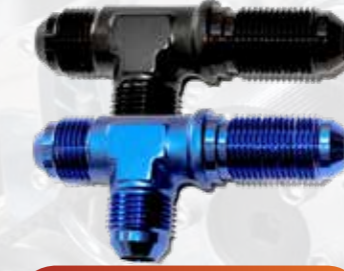
90° BULKHEAD (1 X NUT)		
AN	BLUE	BLACK
-3	833-03	833-03BLK
-4	833-04	833-04BLK
-6	833-06	833-06BLK
-8	833-08	833-08BLK
-10	833-10	833-10BLK
-12	833-12	833-12BLK
-16	833-16	833-16BLK
-20	833-20	833-20BLK



BULKHEAD NUT		
AN	BLUE	BLACK
-3	924-03	924-03BLK
-4	924-04	924-04BLK
-6	924-06	924-06BLK
-8	924-08	924-08BLK
-10	924-10	924-10BLK
-12	924-12	924-12BLK
-16	924-16	924-16BLK
-20	924-20	924-20BLK



BULKHEAD SIDE TEE		
AN	BLUE	BLACK
-3	834-03	834-03BLK
-4	834-04	834-04BLK
-6	834-06	834-06BLK
-8	834-08	834-08BLK
-10	834-10	834-10BLK
-12	834-12	834-12BLK



BULKHEAD TEE ON THE RUN		
AN	BLUE	BLACK
-3	804-03	804-03BLK
-4	804-04	804-04BLK
-6	804-06	804-06BLK
-8	804-08	804-08BLK
-10	804-10	804-10BLK
-12	804-12	804-12BLK



TEFLON WASHER		
AN	PART NO.	QTY
-3	TEFLON-03	5 PK
-4	TEFLON-04	5 PK
-6	TEFLON-06	5 PK
-8	TEFLON-08	5 PK
-10	TEFLON-10	5 PK
-12	TEFLON-12	5 PK
-16	TEFLON-16	5 PK
-20	TEFLON-20	5 PK



STAT-O-SEAL		
AN	PART NO.	QTY
-6	STAT-06	5 PK
-8	STAT-08	5 PK
-10	STAT-10	5 PK
-12	STAT-12	5 PK
-16	STAT-16	5 PK
-20	STAT-20	5 PK



S/S STRAIGHT	
AN	PART NO.
-3	320-03SS



S/S 45° BULKHEAD	
AN	PART NO.
-3	322-03SS



S/S 90° BULKHEAD	
AN	PART NO.
-3	323-03SS



S/S TEE BULKHEAD	
AN	PART NO.
-3	324-03SS



S/S NUT	
AN	PART NO.
-3	924-03SS



MALE FLARE TEE			TEE WITH FEMALE ON THE SIDE			TEE WITH FEMALE ON THE RUN			FEMALE ORB TEE		
AN	BLUE	BLACK	AN	BLUE	BLACK	AN	BLUE	BLACK	ORB	BLUE	BLACK
-3	824-03	824-03BLK	-3	144-03	144-03BLK	-3	145-03	145-03BLK	-3	938-03	938-03BLK
-4	824-04	824-04BLK	-4	144-04	144-04BLK	-4	145-04	145-04BLK	-4	938-04	938-04BLK
-6	824-06	824-06BLK	-6	144-06	144-06BLK	-6	145-06	145-06BLK	-6	938-06	938-06BLK
-8	824-08	824-08BLK	-8	144-08	144-08BLK	-8	145-08	145-08BLK	-8	938-08	938-08BLK
-10	824-10	824-10BLK	-10	144-10	144-10BLK	-10	145-10	145-10BLK	-10	938-10	938-10BLK
-12	824-12	824-12BLK	-12	144-12	144-12BLK	-12	145-12	145-12BLK	-12	938-12	938-12BLK
-16	824-16	824-16BLK	-16	144-16	144-16BLK	-16	145-16	145-16BLK			



MALE FLARE TEE				BILLET Y BLOCK TWIN			TEE WITH NPT ON SIDE				TEE WITH NPT ON RUN			
FEMALE	2 X AN	BLUE	BLACK	SIZE	BLACK	SILVER	AN	NPT	BLUE	BLACK	AN	NPT	BLUE	BLACK
-8	-6	931-08-06	931-08-06BLK	-10 ORB TO 2 X -8 FEMALE	939-08-10BLK	939-08-10S	-3	1/8	825-03	825-03BLK	-3	1/8	826-03	826-03BLK
-10	-8	931-10-08	931-10-08BLK				-4	1/8	825-04	825-04BLK	-4	1/8	826-04	826-04BLK
-12	-10	931-12-10	931-12-10BLK				-6	1/4	825-06	825-06BLK	-6	1/4	826-06	826-06BLK
							-8	3/8	825-08	825-08BLK	-8	3/8	826-08	826-08BLK
							-10	1/2	825-10	825-10BLK	-10	1/2	826-10	826-10BLK
							-12	3/4	825-12	825-12BLK	-12	3/4	826-12	826-12BLK



ALLOY AN BANJOS			ALLOY BANJO BOLTS		
SIZE	BLUE	BLACK	THREAD	BLUE	BLACK
10mm - 7/16 TO -6AN	719-06	719-06BLK	M12 X 1.25	723-06	723-06BLK
12mm - 1/2 TO -4AN	721-04	721-04BLK	M12 X 1.5	724-06	724-06BLK
12mm - 1/2 TO -6AN	721-06	721-06BLK	M14 X 1.5	725-06	725-06BLK
14mm - 9/16 TO -4AN	720-04	720-04BLK	M16 X 1.5	714-06	714-06BLK
14mm - 9/16 TO -6AN	720-06	720-06BLK	M18 X 1.5	715-06	715-06BLK
14mm - 9/16 TO -8AN	720-08	720-08BLK	1/2 X 20 UNF	727-06	727-06BLK
16mm - 5/8 TO -6AN	716-06	716-06BLK	9/16x18	728-06	728-06BLK
18M TO -6AN	717-06	717-06BLK	9/16" X 24	722-06	722-06BLK
18M TO -8AN	717-08	717-08BLK	5/8"-20	726-06	726-06BLK

BANJO BOLT FITTING GUIDE

DELLORTO- SOLEX	M12 X 1.25
WEBBER	M12 x 1.5
STROMBERG	1/2"-20
HOLLEY	9/16"-24
DEMON	9/16"-24
EDELBROCK	5/8"-20



FEMALE TO MALE WITH 1/8" PORT

AN	BLUE	BLACK
-3	140-03	140-03BLK
-4	140-04	140-04BLK
-6	140-06	140-06BLK
-8	140-08	140-08BLK
-10	140-10	140-10BLK
-12	140-12	140-12BLK
-16	140-16	140-16BLK



BANJO KIT SUIT BOSCH PUMP

AN	BLUE	BLACK
-6	720-044-06	720-044-06BLK
-8	720-044-08	720-044-08BLK



FUEL PRESSURE GAUGE (NON LIQUID FILLED)

PSI	PART NO:
15 PSI	FP-15
100 PSI	FP-100



FUEL PRESSURE GAUGE (LIQUID FILLED)

PSI	PART NO:
15 PSI	FP-15L
100 PSI	FP-100L



GAUGE LINE KIT

LENGTH	SILVER	BLACK
1M	GLK-1M	GLK-01MBLK
2M	GLK-2M	GLK-2MBLK



NPT TO AN

AN	FEMALE NPT	BLUE	BLACK
-3	1/8	370-03	370-03BLK
-4	1/8	370-04	370-04BLK



90° NPT TO AN

AN	FEMALE NPT	BLUE	BLACK
-3	1/8	373-03	373-03BLK
-4	1/8	373-04	373-04BLK



TEMPERATURE PROB ADAPTERS

MALE NPT	FEMALE THREAD	BLUE	BLACK
3/8	5/8"-18	660-06	660-06BLK
1/2	5/8"-18	660-08	660-08BLK



S/S BRAIDED FUEL RAIL

AN	SUITS	HOSE	PART NO.
-8	4150 MODELS	RUBBER BRAID	160-08
-8	4150 MODELS	TEFLON	260-08
-8	HOLLEY HP SERIES	RUBBER BRAID	161-08
-8	HOLLEY HP SERIES	TEFLON	261-08
-8	DOMINATOR MODELS	RUBBER BRAID	162-08
-8	DOMINATOR MODELS	TEFLON	262-08



S/S BRAIDED FUEL RAIL

AN	SUITS	HOSE	PART NO.
-8	4150 MODELS	RUBBER BRAID	160-08BLK
-8	4150 MODELS	TEFLON	260-08BLK
-8	HOLLEY HP SERIES	RUBBER BRAID	161-08BLK
-8	HOLLEY HP SERIES	TEFLON	261-08BLK
-8	DOMINATOR MODELS	RUBBER BRAID	162-08BLK
-8	DOMINATOR MODELS	TEFLON	262-08BLK



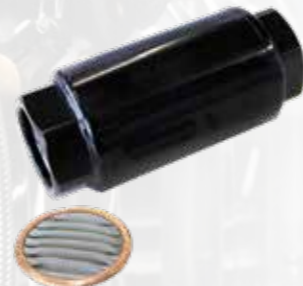
NYLON BRAIDED FUEL RAIL

AN	SUITS	HOSE	PART NO.
-8	4150 MODELS	RUBBER BRAID	163-08BLK
-8	4150 MODELS	TEFLON	263-08BLK
-8	HOLLEY HP SERIES	RUBBER BRAID	164-08BLK
-8	HOLLEY HP SERIES	TEFLON	264-08BLK
-8	DOMINATOR MODELS	RUBBER BRAID	165-08BLK
-8	DOMINATOR MODELS	TEFLON	265-08BLK



1000 SERIES BILLET FILTER
INCLUDES 30, 80 AND 150 MICRON ELEMENTS

AN	SILVER	BLACK
-4	66-1004	66-1004BLK
-6	66-1006	66-1006BLK
-8	66-1008	66-1008BLK
-10	66-1010	66-1010BLK



2000 SERIES BILLET FILTER
40 MICRON ELEMENT

ORB	SILVER	BLACK
-8	66-2008	66-2008BLK

* Suits 66-3B08 Bracket Page 20



HOLLEY INLET ADAPTER

	THREAD	BLUE	BLACK
SHORT	7/8"-20	700-08	700-08BLK
LONG	7/8"-20	700-08L	700-08LBLK



HOLLEY/DEMON INLET ADAPTER

	THREAD	BLUE	BLACK
SHORT	9/16"-24	701-08	701-08BLK
LONG	9/16"-24	701-08L	701-08LBLK



HOLLEY HP INLET ADAPTER

	THREAD	BLUE	BLACK
SHORT	3/4"-16	702-08	702-08BLK
LONG	3/4"-16	702-08L	702-08LBLK



MALE EFI LINE ADAPTERS

BARB	AN	SILVER	BLACK
5/16	-6	807-05S	807-05BLK
3/8	-6	807-06S	807-06BLK
3/8	-8	807-08S	807-08BLK



FEMALE EFI LINE ADAPTERS

FEMALE	AN	SILVER	BLACK
5/16	-6	808-05S	808-05BLK
3/8	-6	808-06S	808-06BLK
3/8	-8	808-08S	808-08BLK



INLINE FUEL & OIL FILTER
INCLUDES 30, 80 AND 150 MICRON ELEMENTS

AN	SILVER	BLACK
-4	66-1004	66-1004BLK
-6	66-1006	66-1006BLK
-8	66-1008	66-1008BLK
-10	66-1010	66-1010BLK



BOSCH BARB ADAPTER

SIZE	BLUE	BLACK
M12x1.5 TO 3/8 BARB	731-01	731-01BLK
M12x1.5 TO 1/2 BARB	731-02	731-02BLK
M18x1.5 TO 1/2 BARB	734-02	734-02BLK



EFI FUEL PUMP CHECK VALVE

SIZE	BLUE	BLACK
M12x1.5 TO -6AN	615-06	615-06BLK
M12x1.5 TO -8AN	615-08	615-08BLK



INLINE CHECK VALVE

AN	BLUE	BLACK
-6	612-06	612-06BLK
-8	612-08	612-08BLK
-10	612-10	612-10BLK
-12	612-12	612-12BLK



BANJO KIT SUIT BOSCH PUMP

AN	BLUE	BLACK
-6	720-044-06	720-044-06BLK
-8	720-044-08	720-044-08BLK



5 PORT FUEL LOG (-10)

SIZE	SILVER	BLACK
5 x -10 ORB	170-10	170-10BLK



BILLET SHUT OFF VALVE

AN	PART NUMBER
-4	VALVE-04
-6	VALVE-06
-8	VALVE-08
-10	VALVE-10
-12	VALVE-12

* NOT RECOMMENDED FOR METHANOL



3000 SERIES PRO FILTER (88MM X 31MM)

ORB	MICRON	SILVER	BLACK
-8	S/S 10 MICRON	66-3008-10	66-3008-10BLK
-8	S/S 60 MICRON	66-3008-60	66-3008-60BLK
-8	S/S 100 MICRON	66-3008-100	66-3008-100BLK

3000 SERIES PRO FILTER (138MM X 50MM)

ORB	MICRON	SILVER	BLACK
-10	S/S 10 MICRON	66-3010-10	66-3010-10BLK
-10	S/S 60 MICRON	66-3010-60	66-3010-60BLK
-10	S/S 100 MICRON	66-3010-100	66-3010-100BLK

3000 SERIES PRO FILTER (185MM X 61MM)

ORB	MICRON	SILVER	BLACK
-12	S/S 10 MICRON	66-3012-10	66-3012-10BLK
-12	S/S 60 MICRON	66-3012-60	66-3012-60BLK
-12	S/S 100 MICRON	66-3012-100	66-3012-100BLK



BILLET FILTER BRACKET -8

SUIT	SILVER	BLACK
-8 PRO FILTER	66-3B08	66-3B08BLK

BILLET FILTER BRACKET -10

SUIT	SILVER	BLACK
-10 PRO FILTER	66-3B10	66-3B10BLK

BILLET FILTER BRACKET -12

SUIT	SILVER	BLACK
-12 PRO FILTER	66-3B12	66-3B12BLK



ELEMENT WITH BILLET HOUSING AND RECESSED MAGNET (NO GLUE)

SUIT	MICRON	COLOUR	PART NO.	SUIT	MICRON	COLOUR	PART NO.	SUIT	MICRON	COLOUR	PART NO.
-8 PRO FILTER	10 MICRON	BLUE	E-3008-10	-10 PRO FILTER	10 MICRON	BLUE	E-3010-10	-12 PRO FILTER	10 MICRON	BLUE	E-3012-10
-8 PRO FILTER	60 MICRON	SILVER	E-3008-60	-10 PRO FILTER	60 MICRON	SILVER	E-3010-60	-12 PRO FILTER	60 MICRON	SILVER	E-3012-60
-8 PRO FILTER	100 MICRON	BLACK	E-3008-100	-10 PRO FILTER	100 MICRON	BLACK	E-3010-100	-12 PRO FILTER	100 MICRON	BLACK	E-3012-100



SINGLE O44 FUEL PUMP BRACKET

SILVER	BLACK
PB-01	PB-01BLK

BILLET TWIN FUEL PUMP BRACKET

SILVER	BLACK
BPB-02	BPB-02BLK

BILLET Y BLOCK

SIZES	SILVER	BLACK
-10 ORB - 2 X -8	939-08-10S	939-08-10BLK
* SUITS BILLET TWIN PUMP BRACKET -BPB-02		



WALBRO 255 E85 COMPATIBLE

LPH	PART NUMBER:
255	WALBRO-255-341
255	WALBRO-255-342

- In-Tank
- 255LPH @ 3bar
- Includes Fitting Kit
- Includes Filter
- Current Draw of 8A @ 3bar
- Internal Check Valve
- 3/8" Barb Outlet
- Will Suck/Lift 2ft
- 39mm Dia

WALBRO 460 E85 COMPATIBLE

LPH	PART NO.:
450	WALBRO-460-267
450	WALBRO-460-274

- In-Tank
- 450LPH @ 3bar.
- Includes Fitting Kit
- Includes Filter
- Current Draw of 16A @ 3bar
- Internal Check Valve
- 3/8" Barb Outlet
- Does Not Suck/Lift more than 1"
- 39mm dia

WALBO 525 E85 COMPATIBLE

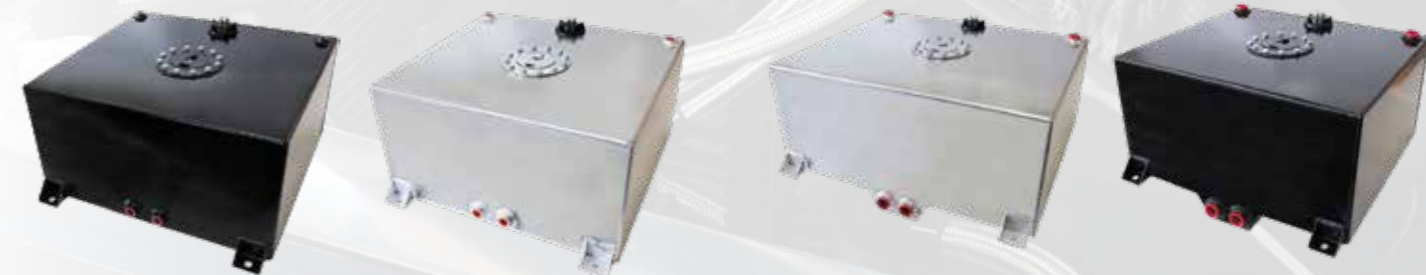
LPH	PART NO.:
470	WALBRO-525

- In-Tank
- 470LPH @ 3bar.
- Includes Fitting Kit
- Includes Filter
- Current Draw of 17A @ 3bar
- Internal Check Valve
- 3/8" Barb Outlet
- Does Not Suck/Lift more than 1"
- 39mm dia

BOSCH O44

LPH	PART NO.:
205	BOSCH-044

- Bosch O44
- 260LPH @ 3bar
- 60mm
- External Check Valve
- Current draw of 11A @ 3bar
- Pump Outlet Thread M12x1.5
- Pump Inlet Thread M18x1.5
- Does Not Suck/Lift. Pre Pump required if not Gravity Fed



57 LITRE FUEL CELL - FLAT BOTTOM

BLACK	DESCRIPTION	RAW
FCF-57BLK	10 ORB OUTLETS 510mm X 460mm X 260mm 0-90ohm SENDER E85 COMPATIBLE FOAM BILLET FUEL CAP	FCF-57L

NOTE: If you are using your own blended ethanol race fuel it is recommend to remove the foam.

57 LITRE FUEL CELL - CAVITY SUMP

BLACK	DESCRIPTION	RAW
FCC-57BLK	10 ORB OUTLETS 510mm X 460mm X 260mm 0-90ohm SENDER E85 COMPATIBLE FOAM BILLET FUEL CAP	FCC-57L

NOTE: If you are using your own blended ethanol race fuel it is recommend to remove the foam.



200 SERIES S/S & 250 SERIES BLACK NYLON TEFLON HOSE

HOSE SIZE	200 SERIES	250 SERIES	I.D. (MM)	O.D. (MM)	OPP PRESSURE	BURST PRESSURE
-3	200-03-1M	250-03-1M	3.5	6.3	4000PSI	12000PSI
-4	200-04-1M	250-04-1M	4.8	7.6	4000PSI	12000PSI



STRAIGHT PTFE HOSE ENDS

AN	ALLOY BLUE	ALLOY BLACK	S/S
-3	201-03D	201-03DBLK	201-03SS
-4	201-04D	201-04DBLK	201-04SS
-4 TO -3 HOSE			201-04-03SS



45° PTFE HOSE ENDS

AN	ALLOY BLUE	ALLOY BLACK	S/S
-3	202-03D	202-03DBLK	202-03SS
-4	202-04D	202-04DBLK	202-04SS



90° PTFE HOSE ENDS

AN	ALLOY BLUE	ALLOY BLACK	S/S
-3	203-03D	203-03DBLK	203-03SS
-4	203-04D	203-04DBLK	203-04SS



REPLACEMENT OLIVES

AN	ALLOY	S/S
-3	OLIVE-203	OLIVE-200
-4	OLIVE-204	OLIVE-201



S/S TURBO OIL FEED ADAPTERS

AN	THREAD	PART NO.
-3	7/16-24	341-03
-4	7/16-24	341-04
-3	1/8" BSP	381-03
-4	1/8" BSP	381-04



TURBO DRAIN ADAPTERS

PART NO.	ORB	BOLT CENTRE
463-01	-8	38-44
463-02	-10	51
463-03	-10	52.4



INLINE OIL FILTER INCLUDES 30,80 AND 150 MICRON ELEMENT

AN	SILVER	BLACK
-4	66-1004	66-1004BLK



HEAT SLEEVE

PART NO.	SIZE	SUITS
HS-10	10mm	-3 & 4 Teflon
HS-12	12mm	-4 Braid, -6 Teflon, -4 Pushlock
HS-15	15mm	-6 Braid, -8 Teflon, -6 Pushlock
HS-20	20mm	-8 Braid, -10 Teflon, -8 Pushlock
HS-25	25mm	-10 Braid, -12 Braid, -12 Teflon, -12 Pushlock
HS-30	30mm	-16 Braid
HS-40	40mm	-20 Braid

* SOLD BY THE METRE IN CONTINUOUS LENGTHS AS REQUIRED.



3/16" BRAKE HARDLINE

METAL	LENGTH	PART NO.
MILD STEEL	7M	HL-316
S/S	7M	HL-316SS



P-CLAMP

SIZE	PART NO.
3/16 HARDLINE	PC-05
-3 TEFLON	PC-06
-4 TELFON	PC-08



SINGLE BILLET CLAMP

SIZE	SILVER	BLACK
3/16 HARDLINE	BPC-05	BPC-05BLK
-3 TEFLON	BPC-06	BPC-06BLK
-4 TELFON	BPC-08	BPC-08BLK



DUAL BILLET CLAMP

SIZE	SILVER	BLACK
3/16 HARDLINE	BPC-205	BPC-205BLK
-3 TEFLON	BPC-206	BPC-206BLK
-4 TELFON	BPC-208	BPC-208BLK



S/S TUBE NUTS

THREAD	PART NO.
3/8-24"	TN-3824
7/16-20"	TN-71620
7/16-24"	TN-71624
1/2-20"	TN-1220
9/16-18"	TN-91618
9/16-20"	TN-91620
M10 x 1.0	TN-M1010
M10 X 1.25	TN-M10125

*SOLD IN PAIRS

IMPERIAL S/S WASHER SEAL ADAPTERS

AN	THREAD	PART NO.
-3	1/8" BSPP	354-03
-4	1/8" BSPP	354-04
-3	3/8-24"	350-03
-4	3/8-24"	350-04
-3	7/16-20"	353-03
-4	7/16-20"	353-04
-3	7/16-24"	355-03
-4	7/16-24"	355-04
-3	1/2-20"	342-03

METRIC S/S WASHER SEAL ADAPTERS

AN	THREAD	PART NO.
-3	M8 x 1.0	349-03
-3	M10 X 1.0	351-03
-4	M10 x 1.0	351-04
-3	M10 X 1.25	352-03
-4	M10 x 1.25	352-04
-3	M10 X 1.5	356-03
-4	M10 x 1.5	356-04
-3	M12 X 1.0	357-03
-4	M12 x 1.0	357-04
-3	M12 X 1.25	358-03
-4	M12 x 1.25	358-04
-3	M12 X 1.5	359-03
-4	M12 x 1.5	359-04



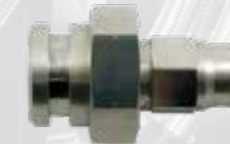
S/S HARDLINE TUBE NUT

SUIT	PART NO.
-3 AN	390-03



S/S INVERTED FLARE UNION

THREAD	PART NO.
3-8-24"	TN-U3824
M10 X 1.0	TN-U1010



FEMALE INVERTED FLARE TO HOSE

THREAD	PART NO.
3/8-24"	230-03SS
M10 X 1.0	231-03SS



FEMALE INVERTED FLARE TO AN

THREAD	PART NO.
3/8-24"	232-03SS
M10 X 1.0	233-03SS



S/S INVERTED FLARE ADAPTERS

AN	THREAD	PART NO.
-3	3/8-24"	340-03
-3	7/16-24"	341-03
-4	7/16-24"	341-04
-3	9/16-20"	348-03
-3	1/2-20"	342-03
-3	9/16-18"	343-03



S/S DUAL SEAT ADAPTERS

AN	THREAD	PART NO.
-3	M10 x 1.0	344-03
-3	M10 X 1.25	345-03
-3	M12 x 1.0	346-03
-3	3/8-24"	347-03



S/S TAPERED SEAL ADAPTERS

AN	THREAD	PART NO.
-3	1/16" NPT	380-03-01
-4	1/16" NPT	380-04-01
-3	1/8" NPT	380-03
-4	1/8" NPT	380-04
-3	1/8" BSPT	381-03
-4	1/8" BSPT	381-04



45° S/S NPT
AN -3
PART NO: 382-03



90° S/S NPT
AN -3
PART NO: 383-03



45° S/S FEMALE TO MALE
AN -3
PART NO: 142-03SS



90° S/S FEMALE TO MALE
AN -3
PART NO: 143-03SS



STRAIGHT S/S BULKHEAD
AN -3
PART NO: 320-03



45° S/S BULKHEAD
AN -3
PART NO: 322-03



90° S/S BULKHEAD
AN -3
PART NO: 323-03



TEE S/S BULKHEAD
AN -3
PART NO: 324-03



S/S BULKHEAD NUT
AN -3
PART NO: 924-03SS



S/S MALE TEE
AN -3
PART NO: 326-03



S/S TEE INVERTED FLARE
THREAD 3/8-24"
PART NO: 327-03



S/S TEE AN/HOSE
AN/HOSE -3
PART NO: 328-03



S/S UNION WITH 1/8"
AN -3
PART NO: 329-03



S/S MALE TO FEMALE WITH 1/8"
AN -3
PART NO: 140-03SS



S/S FEMALE UNION
AN -3
PART NO: 131-03SS



BILLET BOOSTER VALVE
SIZE -6
SILVER BBV-06
BLACK BBV-06BLK



S/S STRAIGHT BANJO TO AN
AN -3
SIZE 3/8" - 10mm
PART NO: 310-03
-3 7/16" - 12mm 311-03
-4 7/16" - 12mm 311-04
-4 9/16" - 14mm 335-04



S/S 20° BANJO TO AN
AN -3
SIZE 3/8" - 10mm
PART NO: 312-03
-3 7/16" - 12mm 318-03



S/S 45° BANJO TO AN
AN -3
SIZE 3/8" - 10mm
PART NO: 332-03
-3 7/16" - 12mm 319-03



S/S 90° BANJO TO AN
AN -3
SIZE 3/8" - 10mm
PART NO: 313-03
-3 7/16" - 12mm 314-03



S/S STRAIGHT BANJO TO HOSE
AN -3
SIZE 3/8" - 10mm
PART NO: 333-03
-3 7/16" - 12mm 334-03



S/S 20° BANJO TO HOSE
AN -3
SIZE 3/8" - 10mm
PART NO: 304-03
-3 7/16" - 12mm 305-03



S/S 45° BANJO TO HOSE
AN -3
SIZE 3/8" - 10mm
PART NO: 306-03
-3 7/16" - 12mm 307-03



S/S 90° BANJO TO HOSE
AN -3
SIZE 3/8" - 10mm
PART NO: 308-03
-3 7/16" - 12mm 309-03



METRIC S/S BANJO BOLTS
THREAD LENGTH PART NO:
M10 x 1.0 25mm 301-03
M10 x 1.25 25mm 302-03
M12 x 1.0 31mm 315-04
M12 x 1.25 31mm 316-04
M12 x 1.5 31mm 317-04
M14 x 1.5 31mm 317-06



IMPERIAL S/S BANJO BOLTS
THREAD LENGTH PART NO:
3/8-24" 25mm 300-03
7/16-20" 25mm 300-04
7/16-24" 25mm 303-03



NPT TO AN
AN NPT BLUE BLACK
-3 1/8 370-03 370-03BLK
-4 1/8 370-04 370-04BLK



90° NPFT TO AN
AN NPT BLUE BLACK
-3 1/8 373-03 373-03BLK
-4 1/8 373-04 373-04BLK



LS OIL PRESSURE ADAPTER

THREAD	PORT	SILVER	BLACK
M16X1.5	1/8TH"	LS-02	LS-02BLK



TEMPERATURE PROBE ADAPTER

MALE NPT	FEMALE THREAD	SILVER	BLACK
3/8	5/8"-18	660-06	660-06BLK
1/2	5/8"-18	660-08	660-08BLK



RB30 ROCKER COVER BREATHER SCREW IN

THREAD	AN	SILVER	BLACK
19mm	-10	708-10-M19	708-10-M19BLK



PRO TRANSCOOLER KIT - S/S 200 SERIES HOSE

MODEL	PART NO:	DESCRIPTION
POWERGLIDE	TC-KIT-01	ALL KITS COME WITH GEARBOX FITTINGS TO SUIT MODEL.
TH350	TC-KIT-02	
TH400	TC-KIT-03	
4L60,4L60E,4L80	TC-KIT-04	4.5M OF 200 SERIES TEFLON HOSE
C4, C6	TC-KIT-05	2 X STRAIGHT FITTINGS
BTR	TC-KIT-06	2 X 90 DEGREE FITTINGS
TRIMATIC	TC-KIT-07	1 X 280-210 -19mm TRANS COOLER WITH -6AN FITTINGS
TORQUEFLITE	TC-KIT-08	
FORD ZF 6HP26	TC-KIT-09	
6L80E	TC-KIT-10	



PRO TRANSCOOLER KIT - S/S 200 SERIES HOSE

MODEL	PART NO:	DESCRIPTION
POWERGLIDE	TC-KITBK-01	ALL KITS COME WITH GEARBOX FITTINGS TO SUIT MODEL.
TH350	TC-KITBK-02	
TH400	TC-KITBK-03	
4L60,4L60E,4L80	TC-KITBK-04	4.5M OF 250 SERIES TEFLON HOSE
C4, C6	TC-KITBK-05	2 X STRAIGHT FITTINGS
BTR	TC-KITBK-06	2 X 90 DEGREE FITTINGS
TRIMATIC	TC-KITBK-07	1 X 280-210 -19mm TRANS COOLER WITH -6AN FITTINGS
TORQUEFLITE	TC-KITBK-08	
FORD ZF 6HP26	TC-KITBK-09	
6L80E	TC-KITBK-10	



GAUGE LINE KIT

LENGTH	SILVER	BLACK
1M	GLK-1M	GLK-01MBLK
2M	GLK-2M	GLK-2MBLK



PUSH IN BREATHER ADAPTER

BARB	SILVER	BLACK
1 INCH	711-10	711-10BLK

SUIT 1" RUBBER GROMMETS



SR20-RB25 ROCKER COVER BREATHER 5/8"

BARB	AN	BLUE	BLACK
5/8"	-10	708-10-01	708-10-01BLK



TRANSCOOLER (WITH -6AN)

SIZE (MM)	PART NO:
280 x 210 x 19	TC-280-06



1/4 NPSM GEARBOX FITTINGS

SUIT	PART NO:
4L60,4L80,700r	375-06
TH350, TH400	



VE - VF 6L80E

AN	PART NO:
-6	377-06



BOLT IN BREATHER BULKHEAD

AN	SILVER	BLACK
-10	710-10	710-10BLK



BILLET BREATHERS

ORB	SILVER	BLACK
-10	750-10	750-10BLK



CLEAR REINFORCED BREATHER HOSE

PART NUMBER	ID
410-19-1M	19MM
410-25-1M	25MM
410-32-1M	32MM
410-38-1M	38MM

*SOLD BY THE METRE IN CONTINUOUS LENGTH AS REQUIRED
*FITTINGS TO SUIT LOCATED ON PAGE NINE



FORD ZF 6HP26 - XR GEARBOX FITTINGS

AN	PART NO:
-6	376-06
-8	376-08



POWER STEER BUMP TUBE ADAPTERS

AN	SIZE	SILVER	BLACK
6	M14x1.5	740-06	740-06BLK
6	M16x1.5	741-06	741-06BLK
6	M18x1.5	742-06	742-06BLK



INVERTED FLARE ADAPTERS

AN	THREAD	BLUE	BLACK
6	7/16" X 24	702-06	702-06BLK
8	1/2" X 20	703-06	703-06BLK
6	1/2" X 20	703-08	703-08BLK
6	5/8" X 18	704-06	704-06BLK
8	5/8" X 19	704-08	704-08BLK
10	5/8" X 20	704-10	704-10BLK
6	11/16" X 18	705-06	705-06BLK



WELD-ON MALE AN

AN	ALUMINIUM	STEEL	S/S
-3	999-03D	999-03S	999-03SS
-4	999-04D	999-04S	999-04SS
-6	999-06D	999-06S	999-06SS
-8	999-08D	999-08S	999-08SS
-10	999-10D	999-10S	999-10SS
-12	999-12D	999-12S	999-12SS
-16	999-16D	999-16S	999-16SS
-20	999-20D	999-20S	999-20SS



WELD-ON ORB

ORB	ALUMINIUM
-4	998-04D
-6	998-06D
-8	998-08D
-10	998-10D
-12	998-12D
-16	998-16D
-20	998-20D



WELD-ON FEMALE NPT

SIZE	ALUMINIUM
1/8"	996-02
1/4"	996-04
3/8"	996-06



BILLET WELD ON FILLER CAP

SIZE (I.D.)	SILVER	BLACK
25mm	460-20	460-20BLK
35MM	460-24	460-24BLK
47mm	460-32	460-32BLK



S/S CINTERED BREATHER

SIZE	PART NO.
1/8"	470-02



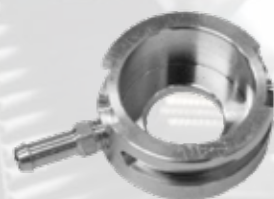
STEEL WELD ON DIFF FILLER

SIZE	PART NO.
1-1/2"	480-01



WELD-ON BARB

SIZE	ALUMINIUM
5/16"	997-05
3/8"	997-06
1/2"	997-08
5/8"	997-10



BILLET RADIATOR NECKS

SIZE (I.D.)	PART NO.
32mm	RAD-32
42mm	RAD-42



S/S O2 WELD ON BUNG

LENGTH	THREAD	PART NO.
8mm	M18 x 1.5	991-01SS
25mm	M18 X 1.5	991-02SS



S/S SCREW IN O2 PLUG WITH WASHER

THREAD	PART NO.
M18 x 1.5	992-02SS



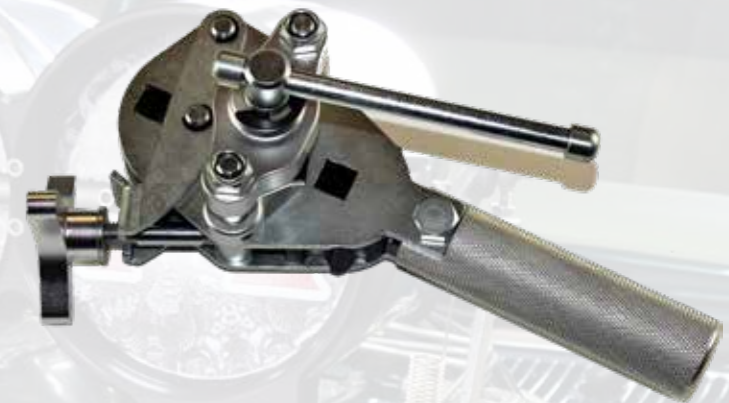
S/S V-BAND KIT

SIZE	PART NO.
2.0"	VB-200
2.5"	VB-250
3.0"	VB-300
3.5"	VB-350
4.0"	VB-400



ALLOY BILLET VICE JAWS

SIZE	PART NO.
UNIVERSAL	98-2001



37 DEGREE FLARE TOOL

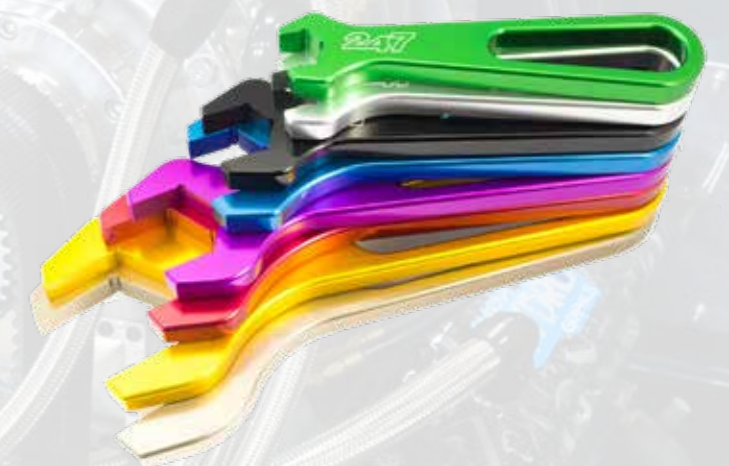
SIZE	PART NO.
1/8TH TO 3/4 TUBE	98-2007



ALLOY BILLET SHIFTER

SIZE	PART NO.
-3AN TO -12AN.	98-2003

*NOT RECOMMENDED FOR THE USE OF ASSEMBLING FITTINGS



ALLOY BILLET SPANNER SET

SIZE	PART NO.
-3AN TO -20AN.	98-2004

BILLET 8 PIECE SPANNER SET
*NOT RECOMMENDED FOR THE USE OF ASSEMBLING FITTINGS



LARGE HOSE CUTTERS

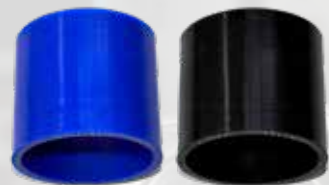
SIZE	PART NO.
-3 & -20	98-2016

*LARGE CUTTERS CUT -20



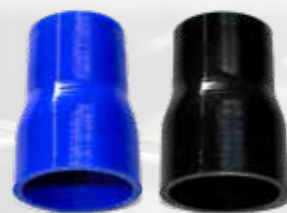
TEFLON HOSE CUTTERS

SIZE	PART NO.
-3 & -4	98-2015



STRAIGHT SILICONE JOINER (75MM LONG)

I.D.	BLUE	BLACK
1.5" (38MM) I.D.	S150	S150BLK
1.75" (45MM) I.D.	S175	S175BLK
2" (51MM) I.D.	S200	S200BLK
2-3/16" (55MM) I.D.	S2187	S2187BLK
2.25" (57MM) I.D.	S225	S225BLK
2-3/8" (60MM) I.D.	S2375	S2375BLK
2.5" (63MM) I.D.	S250	S250BLK
2.75" (70MM) I.D.	S275	S275BLK
3" (76MM) I.D.	S300	S300BLK
3.25" (86MM) I.D.	S325	S325BLK
3.5" (90MM) I.D.	S350	S350BLK
3.75" (95MM) I.D.	S375	S375BLK
4" (102MM) I.D.	S400	S400BLK
5" (127MM) I.D.	S500	S500BLK



STRAIGHT SILICONE REDUCER (102MM LONG)

I.D.	BLUE	BLACK
1.75" - 1.5" (45-38MM) I.D.	S175-150	S175-150BLK
2" - 1.5" (51-38MM) I.D.	S200-150	S200-150BLK
2" - 1.75" (51-45MM) I.D.	S200-175	S200-175BLK
2.25" - 2" (57-51MM) I.D.	S225-200	S225-200BLK
2.5" - 2" (63-51MM) I.D.	S250-200	S250-200BLK
2.5" - 2.25" (63-57MM) I.D.	S250-225	S250-225BLK
2.75" - 2.00" (70-51MM) I.D.	S275-200	S275-200BLK
2.75" - 2.5" (70-63MM) I.D.	S275-250	S275-250BLK
2.75" - 2.25" (70-57MM) I.D.	S275-225	S275-225BLK
3" - 2" (76-51MM) I.D.	S300-200	S300-200BLK
3" - 2.25" (76-57MM) I.D.	S300-225	S300-225BLK
3" - 2.5" (76-63MM) I.D.	S300-250	S300-250BLK
3" - 2.75" (76-70MM) I.D.	S300-275	S300-275BLK
3.25" - 2.25" (83-57MM) I.D.	S325-225	S325-225BLK
3.25" - 2.5" (83-63MM) I.D.	S325-250	S325-250BLK
3.25" - 2.75" (83-70MM) I.D.	S325-275	S325-275BLK
3.25" - 3" (83-76MM) I.D.	S325-300	S325-300BLK
3.50" - 2.25" (90-57MM) I.D.	S350-225	S350-225BLK
3.50" - 2.50" (90-63MM) I.D.	S350-250	S350-250BLK
3.50" - 2.75" (90-70MM) I.D.	S350-275	S350-275BLK
3.50" - 3.00" (90-76MM) I.D.	S350-300	S350-300BLK
3.50" - 3.25" (90-86MM) I.D.	S350-325	S350-325BLK
3.75" - 3.25" (95-83MM) I.D.	S375-325	S375-325BLK
3.75" - 3.00" (95-76MM) I.D.	S375-300	S375-300BLK
3.75" - 3.50" (95-90MM) I.D.	S375-350	S375-350BLK
4.00" - 2.00" (102-51MM) I.D.	S400-200	S400-200BLK
4" - 2.5" (102-63MM) I.D.	S400-250	S400-250BLK
4" - 3" (102-76MM) I.D.	S400-300	S400-300BLK
4.00" - 3.25" (102-83MM) I.D.	S400-325	S400-325BLK
4" - 3.5" (102-89MM) I.D.	S400-350	S400-350BLK
4.00" - 3.75" (102-95MM) I.D.	S400-375	S400-375BLK



45° SILICONE REDUCER

SIZE	BLUE	BLACK
2.25" - 2" (57-51MM) I.D.	S45-225-200	S45-225-200BLK
2-3/8" - 2.00" I.D.	S45-2375-200	S45-2375-200BLK
2.5" - 2" (63-51MM) I.D.	S45-250-200	S45-250-200BLK
3" - 2" (76-51MM) I.D.	S45-300-200	S45-300-200BLK
2.5" - 2.25" (63-57MM) I.D.	S45-250-225	S45-250-225BLK
2.75" - 2-3/8" (70-60MM) I.D.	S45-275-2375	S45-275-2375BLK
2.75" - 2.5" (70-63MM) I.D.	S45-275-250	S45-275-250BLK
3" - 2.25" (90-57MM) I.D.	S45-300-225	S45-300-225BLK
3" - 2.5" (76-63MM) I.D.	S45-300-250	S45-300-250BLK
3" - 2.75" (76-70MM) I.D.	S45-300-275	S45-300-275BLK
3.25" - 2.50" (86-63MM) I.D.	S45-325-250	S45-325-250BLK
3.5" - 2.5" (90-63MM) I.D.	S45-350-250	S45-350-250BLK
3.5" - 3" (90-76MM) I.D.	S45-350-300	S45-350-300BLK
4" - 3" (102-76MM) I.D.	S45-400-300	S45-400-300BLK
4" - 3.5" (102-90MM) I.D.	S45-400-350	S45-400-350BLK



45° SILICONE ELBOW

SIZE	BLUE	BLACK
1.5" (38MM) I.D.	S45-150	S45-150BLK
2" (51MM) I.D.	S45-200	S45-200BLK
2-3/16" (55MM) I.D.	S45-2187	S45-2187BLK
2.25" (57MM) I.D.	S45-225	S45-225BLK
2 (63MM) I.D.	S45-250	S45-250BLK
2.75" (70MM) I.D.	S45-275	S45-275BLK
3" (76MM) I.D.	S45-300	S45-300BLK
3.25" (86MM) I.D.	S45-325	S45-325BLK
3.5" (90MM) I.D.	S45-350	S45-350BLK
4" (102MM) I.D.	S45-400	S45-400BLK



90° SILICONE ELBOW

SIZE	BLUE	BLACK
1.5" (38MM) I.D.	S90-150	S90-150BLK
1.75" (45MM) I.D.	S90-175	S90-175BLK
2" (51MM) I.D.	S90-200	S90-200BLK
2-3/16" (55MM) I.D.	S90-2187	S90-2187BLK
2.25" (57MM) I.D.	S90-225	S90-225BLK
2-3/8" (60MM) I.D.	S90-2375	S90-2375BLK
2.5" (63MM) I.D.	S90-250	S90-250BLK
2.75" (70MM) I.D.	S90-275	S90-275BLK
3" (76MM) I.D.	S90-300	S90-300BLK
3.25" (86MM) I.D.	S90-325	S90-325BLK
3.5" (90MM) I.D.	S90-350	S90-350BLK
3.75" (95MM) I.D.	S90-375	S90-375BLK
4" (102MM) I.D.	S90-400	S90-400BLK



90° SILICONE REDUCER

SIZE	BLUE	BLACK
2" - 1.5" (51-38MM) I.D.	S90-200-150	S90-200-150BLK
2" - 1.75" (51-45MM) I.D.	S90-200-175	S90-200-175BLK
2-3/8" - 2" (60-51MM) I.D.	S90-2375-200	S90-2375-200BLK
2.25" - 2" (57-51MM) I.D.	S90-225-200	S90-225-200BLK
2.5" - 2" (63-51MM) I.D.	S90-250-200	S90-250-200BLK
2.5" - 2.25" (63-57MM) I.D.	S90-250-225	S90-250-225BLK
2.75" - 2" (70-51MM) I.D.	S90-275-200	S90-275-200BLK
2.75" - 2-3/8" (70-60MM) I.D.	S90-275-2375	S90-275-2375BLK
2.75" - 2.5" (70-63MM) I.D.	S90-275-250	S90-275-250BLK
3" - 2" (75-51MM) I.D.	S90-300-200	S90-300-200BLK
3" - 2.25" (90-57MM) I.D.	S90-300-225	S90-300-225BLK
3" - 2.5" (76-63MM) I.D.	S90-300-250	S90-300-250BLK
3" - 2.75" (76-70MM) I.D.	S90-300-275	S90-300-275BLK
3.25" - 2.50" (86-63MM) I.D.	S90-325-250	S90-325-250BLK
3.25" - 3" (83-76MM) I.D.	S90-325-300	S90-325-300BLK
3.5" - 2.5" (90-63MM) I.D.	S90-350-250	S90-350-250BLK
3.5" - 3" (90-76MM) I.D.	S90-350-300	S90-350-300BLK
4" - 3" (102-76MM) I.D.	S90-400-300	S90-400-300BLK
4" - 3.5" (102-90MM) I.D.	S90-400-350	S90-400-350BLK



135° SILICONE HOSE ELBOW

SIZE	BLUE	BLACK
1.5" (38MM) I.D.	S135-150	S135-150BLK
2" (51MM) I.D.	S135-200	S135-200BLK
2.5" (63MM) I.D.	S135-250	S135-250BLK
3" (76MM) I.D.	S135-300	S135-300BLK
3.5" (90MM) I.D.	S135-350	S135-350BLK
4" (102MM) I.D.	S135-400	S135-400BLK



180° SILICONE HOSE ELBOW

SIZE	BLUE	BLACK
2" (51MM) I.D.	S180-200	S180-200BLK
2-1/2" (63MM) I.D.	S180-250	S180-250BLK
3" (76MM) I.D.	S180-300	S180-300BLK
3-1/2" (90MM) I.D.	S180-350	S180-350BLK
4" (102MM) I.D.	S180-400	S180-400BLK



SILICONE VACCUM HOSE

SIZE	BLUE	BLACK
1/8" (3MM) I.D	SV-03-IM	SV-03-IMBLK
5/32" (4MM) I.D	SV-04-IM	SV-04-IMBLK
3/16" (4MM) I.D	SV-05-IM	SV-05-IMBLK
1/4" (6MM) I.D	SV-06-IM	SV-06-IMBLK
5/16" (8MM) I.D	SV-08-IM	SV-08-IMBLK
3/8" (10MM) I.D	SV-10-IM	SV-10-IMBLK
1/2" (12MM) I.D	SV-12-VM	SV-12-VMBLK
9/16" (14MM) I.D	SV-14-IM	SV-14-IMBLK
5/8" (16MM) I.D	SV-16-IM	SV-16-IMBLK
3/4" (18MM) I.D	SV-18-IM	SV-18-IMBLK

SILICONE HUMP HOSE

SIZE	BLUE	BLACK
2" (51MM) I.D (102MM) LONG	SH-200	SH-200BLK
2.5" (63MM) I.D (102MM) LONG	SH-250	SH-250BLK
3" (76MM) I.D (102MM) LONG	SH-300	SH-300BLK
3.5" (90MM) I.D (102MM) LONG	SH-350	SH-350BLK
4" (102MM) I.D (102MM) LONG	SH-400	SH-400BLK



S/S T-BOLT CLAMPS

SUIT	PART NUMBER
2.00"	TB-200
2.25"	TB-225
2.50"	TB-250
2.75"	TB-275
3.00"	TB-300
3.25"	TB-325
3.50"	TB-350
3.75"	TB-375
4.00"	TB-400

1 METRE LENGTH SILICONE STICKS

SIZE	BLUE	BLACK
2" (51MM) I.D	S200-IM	S200-IMBLK
2.5" (63MM)	S250-IM	S250-IMBLK
3" (76MM) I.D	S300-IM	S300-IMBLK
3.5" (90MM) I.D	S350-IM	S350-IMBLK
4" (102MM) I.D	S400-IM	S400-IMBLK



LS SINGLE STEAM PORT BLEED

LS TWIN STEAM PORT BLEED

LS OIL PRESSURE ADAPTER

LS OIL PICK UP TUBE BRACE

SIZE	SILVER	BLACK	SIZE	SILVER	BLACK
3AN	LS-03S	LS-03BLK	2 X -3AN	LS-03-2S	LS-03-2BLK
4AN	LS-04S	LS-04BLK	2 X -4AN	LS-04-2S	LS-04-2BLK

THREAD	PORT	SILVER	BLACK	SUIT	PART NO.
M16X1.5	1/8TH"	LS-02	LS-02BLK	LS SERIES	LS-05



Dan COrrin
V8 Saloon Car ° Corrin Engineering



Dean Chistensen
BADTMPR – Motorworx



Chris Campion
13BT – Datsun 1600



Anthony Rizk
383 Windsor



VK – LSA
CUH8N



The Tint Shop
13BT – Mazda RX7



Cam Riley
LSX Twin Turbo – Fraser Race Fab



Drift School Australia



Danny Probert – X Drift Industries
Darwin Auto Mobile Care



Steve Sines – Kinger



LBP Drift
2018 DINZ Pro-Sport Champion



Peter Kulakouski
RX4 Coupe 20BT – SDR Motorsport



PRODUCT CATALOGUE

#FITTINGS742